

CERTIFICATE OF LOCATION OF GOVERNMENT CORNER

NORTH QUARTER Corner of Section 25, Township 106, Range 39, 5TH P.M.

STATE OF MINNESOTA, County of MURRAY

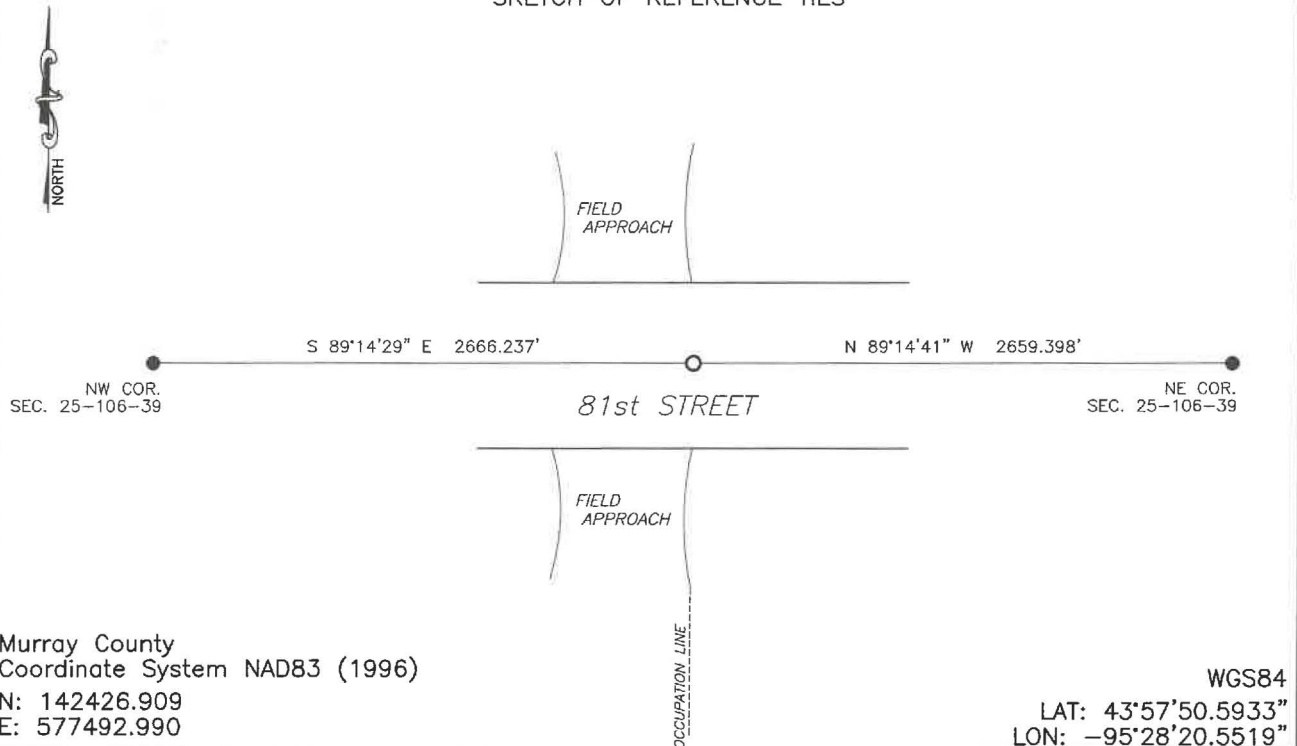
At the corner location shown on the sketch:

☒ On 8/13/2024 found a wooden stake with pieces of concrete around it.
DATE

☒ left monument as found, ☐ lowered monument, ☐ removed monument (explain)

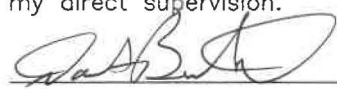
☒ On 1/29/2025 placed a 5/8" iron with seal #43844 over top of the wooden stake
DATE

SKETCH OF REFERENCE TIES



Statement of evidence relative to this corner location is on back of page.

I hereby certify that this document and the data contained herein was prepared by me or under my direct supervision.



Daniel L. Bueltel
License No. 43844

3/13/2025
DATE

MAR 13 2025



MURRAY COUNTY RECORDER

Statement of Evidence

NORTH QUARTER CORNER SECTION 25, T106N, R39W OF THE 5th P.M.

In September 1858 W.J. Neely surveyed the east township line.

In July of 1861 J.W. Myers surveyed the north, south, and west township lines.

In August of 1861 Wellman & Smoot subdivided the township.

County records dated May 26, 2017 show a spike with ribbon located at the corner.

On June 28, 2024 Bueltel-Moseng Land Surveying searched the area and found a spike with ribbon.

On August 13, 2024, Bueltel-Moseng Land Surveying dug with a backhoe and found a wooden stake with pieces of concrete around it.

Returned on January 29, 2025 and set a $\frac{5}{8}$ " iron with seal #43844 over top of the wooden stake.